



Bennett & Bennett
Consulting Surveyors, Development Consultants
& Town Planners

BBH Pty. Ltd. A.C.N. 010,427,631
All mail to: PO Box 5021 G.C.M.C. Qld 9726
mail@bennettandbennett.com.au
95 Union Street, 21 Dreamworld Parkway,
Coomera
Bundall
Ph (07) 5574 0733 Ph (07) 5573 6177
Fax (07) 5574 0202 Fax (07) 5529 4342

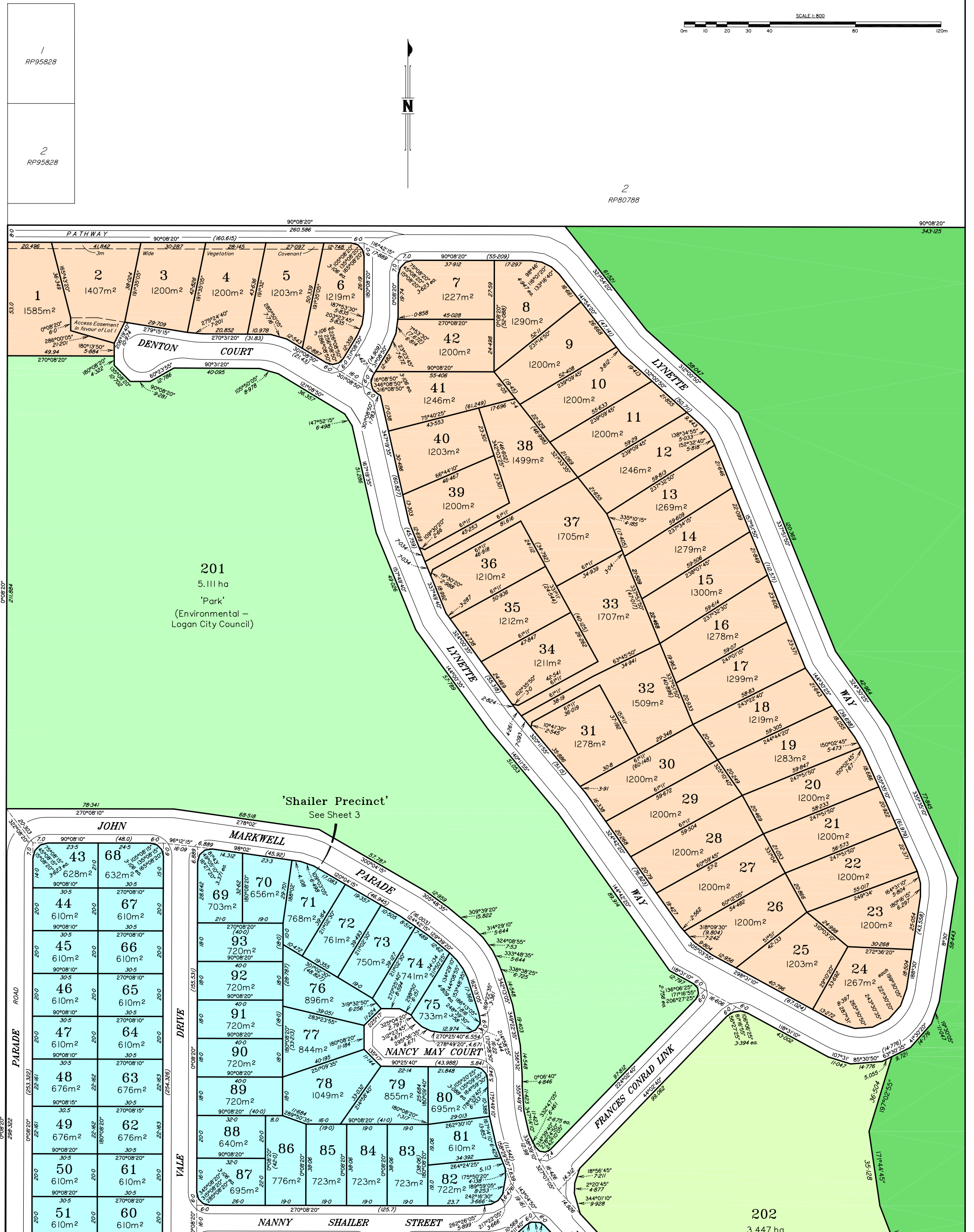
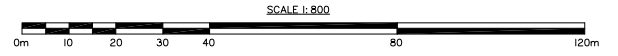
Revision	Date
A	24.8.05
B	26.8.05
C	29.8.05
D	18.7.06
E	23.11.06
F	18.1.07

'DENNIS PRECINCT'
Site Area - 7.323 ha
Number of Lots - 42
Minimum Lot Area - 1200 m²
Average Lot Area - 1220 m²
Area of New Road - 2.20 ha (approx.)
Length of New Road - 1200 m
(approx.)

NOTES
1. All dimensions are site file and subject to confirmation by survey and approval by Logan City Council.
2. Final Boundary between Lots 202 & 203 has been determined in conjunction with Logan City Council and E.P.A.
3. Drawn to scale on A1 sheet.

TITLE
'Sanctuary Park'
Proposed Lots 1-180
& 201-205 Cancelling
Lots 1 & 2 on
SP168264

CLIENT	Drawn	Sur/d	Authorised	Lib/ook	Date	Dwg File	PLAN No.	Rev.
NCR SECURITIES PTY LTD	DJ	PI			24.8.2005	23259PR08	1600(A3)	F
Parish	REDLAND	County	STANLEY	Job Ref.	03.259.A600	23259.★	17 (Sheet 2 of 3)	



1
RP95828

2
RP95828

2
RP80788

201
5.111 ha
'Park'
(Environmental - Logan City Council)

'Shailer Precinct'
See Sheet 3

202
3.447 ha