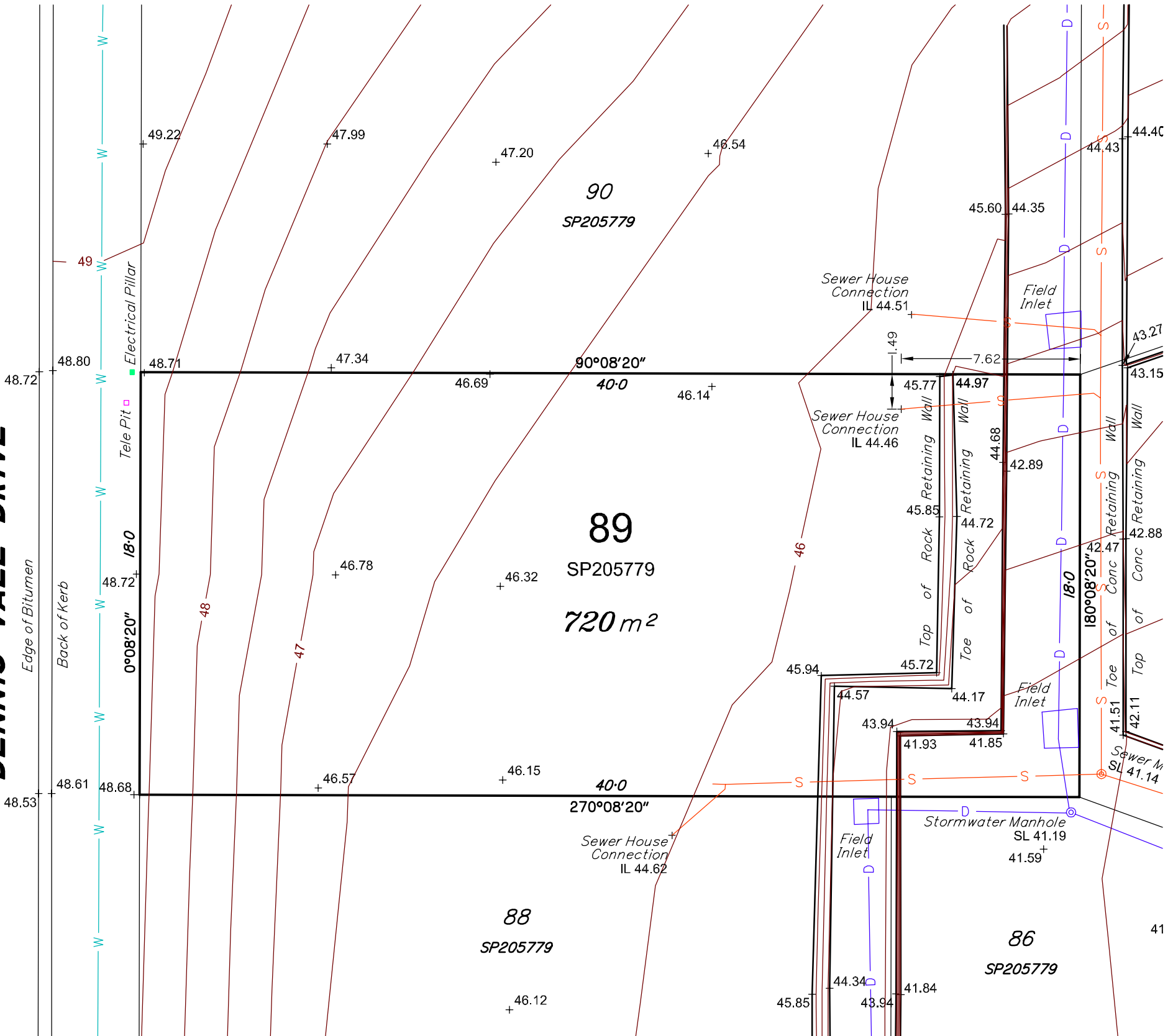
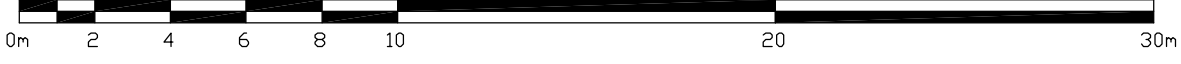


**DENNIS VALE DRIVE**



SCALE 1:200



**UTILITY SERVICES LEGEND**

W Water Supply  
 D Stormwater Drainage  
 S Sewer

NOTE : Underground Power & Telstra not Located

**NOTE**

- All levels are in metres & referred to PM74039 RL 47.503 AHD situated at the intersection of Daisy Hill Road and Chatswood Road.
- All dimensions are vide title.
- Contour Interval . . 0.5m
- Drawn to scale on an A3 sheet.
- The exact location of underground services should be confirmed with the relevant authority prior to construction.

Client	NCR SECURITIES PTY LTD	Plan No.	70
Local Auth.	LCC	Drawn	CTW
County	WARD	Dwg.	03259LOT89
Parish	STANLEY	Date	11/08/2008
Comp. Ref	03259LOT CONTOURS	Surv. Ref.	03259

**Contour Survey of**  
**Lot 89 on SP205779**  
 Dennis Vale Drive,  
 'THE SANCTUARY' DAISY HILL

**BENNETT + BENNETT**  
 Property Consultants, Surveyors + Town Planners

All mail to: PO Box 5021. GCMC., Qld. 9726  
 mail@bennettandbennett.com.au  
 BBH Pty. Ltd. A.C.N. 010 427 531

<b>BRISBANE OFFICE</b> Level 3, 490 Upper Edward St. Spring Hill Ph (07) 3839 7200 Fax (07) 3839 7277	<b>GOLD COAST OFFICE</b> 95 Upton Street, Bundall Ph (07) 5574 0733 Fax (07) 5574 0202	<b>COOMERA OFFICE</b> 9 Jowett Street, Coomera Ph (07) 5573 6177 Fax (07) 5529 4342
----------------------------------------------------------------------------------------------------------------------	-------------------------------------------------------------------------------------------------	-------------------------------------------------------------------------------------------------